



Solutions to
Shape the World™

Reliance
Worldwide
Corporation

Fast, reliable and efficient solutions...

for compressed air
and pneumatics



John Guest®



SharkBite®



Contents

Welcome to our comprehensive range of pipes and fittings for compressed air and pneumatics.

NEW

Introduction

One family of brands	4
Fast, reliable and efficient solutions for air and pneumatics	6

John Guest

Overview	8
Inside John Guest technology	10
Making a connection	12

Air ring main

Fittings	14
Pipe	16

Air & pneumatics

Miniature fittings	16
Metric fittings	17
Banjo Flow Control	21
Imperial fittings	21
LLDPE pipe	25
Accessories	26

SharkBite

Overview	28
Inside SharkBite technology	30
Making a connection	32

Air & pneumatics

Brass fittings	34
Brass valves	35
Pipe	35
Accessories	35

Selecting the right pipe

Key information

Condition of sale	38
Technical information	38
Maintenance & replacement intervals	38



One family of brands

Reliance Worldwide Corporation (RWC) and its family of brands transform the way pipe connections are made across the globe for a diverse range of sectors such as compressed air & pneumatics, plumbing & heating, drinks dispense, telecoms and automotive.

Millions of connections made worldwide

Both market leaders and niche players have been using our push-fit technology for more than five decades to solve the key challenges they face. Why? Because the clever science behind our solutions ensure optimal performance, while providing fast, simple and reliable installation.

Precision engineering and world-class quality

Innovative design is at our core. It means clever, time-saving solutions for you, engineered with lasting quality you can rely on. From state-of-the-art R&D to world-class product testing and quality control, our innovations are the by-product of pure engineering mastery. The same ethos drives our customer service and design service, ensuring we provide expert support whenever you need it.



Fast, reliable and efficient solutions for air and pneumatics

Together John Guest and SharkBite offer an extended range of reliable, sustainable and efficient push-fit fittings and pipes for compressed air and pneumatics.

Available in 3 to 54mm sizes, our high performance air piping systems are fast and easy to install and deliver substantial labour and energy savings when compared to traditional methods.



Optimal flow and air quality

Outperforming steel or copper, which can degrade over time, our range of products resist corrosion ensuring optimal flow and air quality, while extending system and equipment lifecycle and efficiency.

Ultimate performance and efficiency

Since inventing the world's first push-fit compressed air fitting over 45 years ago, we have continued to perfect our design and unique sealing technology to reduce energy consumption, increase air flow and eliminate pressure drops and leaks.

System set up in half the time

Fast and simple to use, our air piping systems reduce installation time by up to 50% when compared to

conventional methods. Using an instant push-fit action, connections are made without tools or the need to thread, solder or glue pipes.

Alter, extend or modify in seconds

Our components are easy to disconnect, reusable and interchangeable, making layout modifications quick and simple with minimal production downtime and expense.

Greater choice and design freedom

Plastic and brass push-fit fittings and lightweight pipe that is easier to handle than copper and steel. Components can be used in many combinations and are also compatible with other types of pipe.





Make reliable connections the fast and simple way

For small to mid-size commercial applications

Quick and easy to install, the John Guest Air & Pneumatics push-fit range ensures air tight pipe connections are made. Available in 3 to 28mm sizes, our robust range of fittings and pipes are ideal for small to mid-size applications such as garages and a variety of other commercial air piping systems.

John Guest offers rapid assembly using a simple push-fit action that eliminates the need for tools, threaded pipe, solvent and glue. Our unique collet locking design firmly and securely holds the pipe in place without deforming the pipe or restricting flow. John Guest air

systems are easy to extend or alter as fittings are fully demountable, without using tools, which reduces maintenance and production downtime.

Fittings are available in tough engineered plastic or brass, including a unique water trap that removes moisture from the air line to improve system performance and longevity.

Designed to work with our nylon, powder coated aluminium pipe or LLDPE pipe, our versatile solution is also compatible with copper, PEXa and other soft metal pipes.

Features

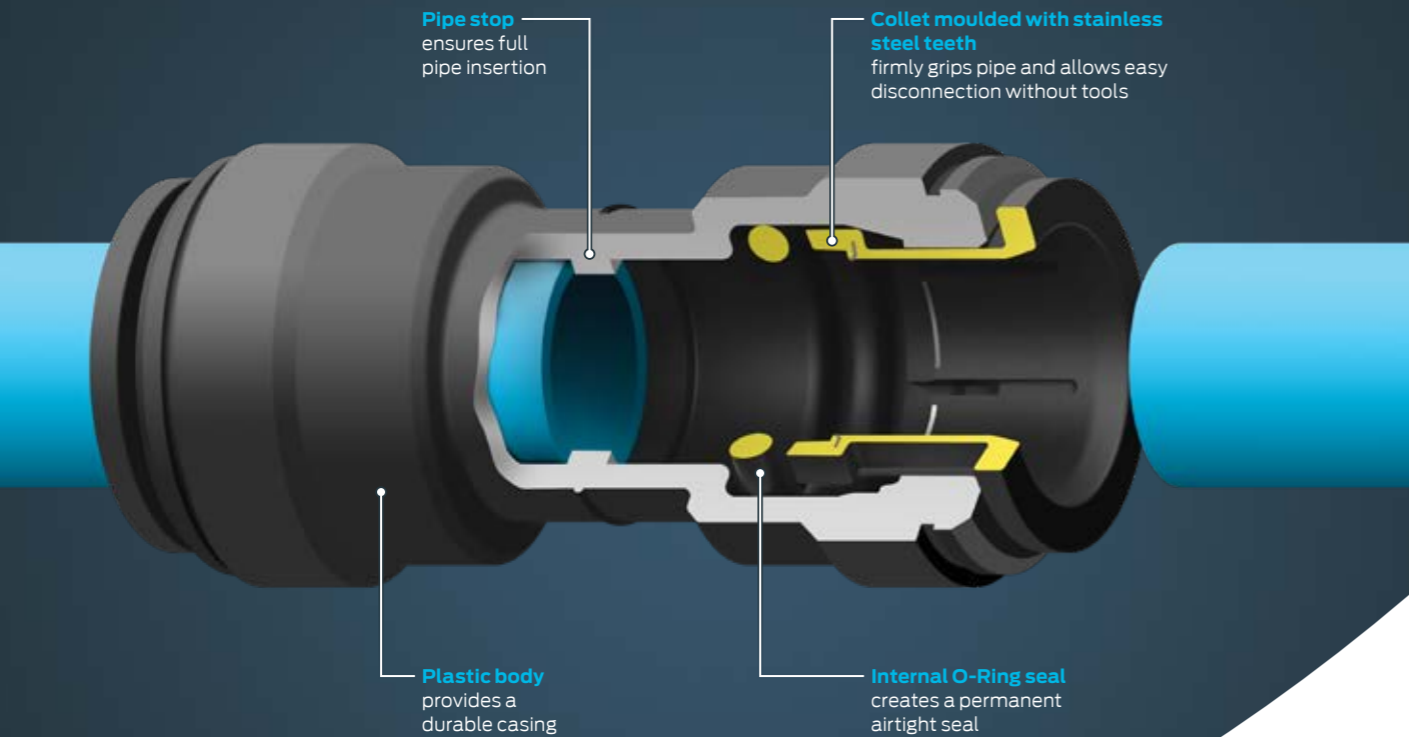
- Acetal copolymer or brass fittings
- Push-fit connection ends
- Demountable design without using tools
- Secure collet cover to prevent accidental disconnection
- Nitrile O-Ring and collet with stainless steel teeth
- Suitable for air and vacuum applications up to 10 bar

Benefits

- Reliable leakproof solution that grips before it seals
- Instant, tool-free push-fit connection
- Corrosion-free solution that extends equipment lifecycle and reduces maintenance
- Fast and simple system alterations or extension, with minimal downtime
- Lightweight and easy to handle material
- A versatile solution that connects to metal or plastic pipe

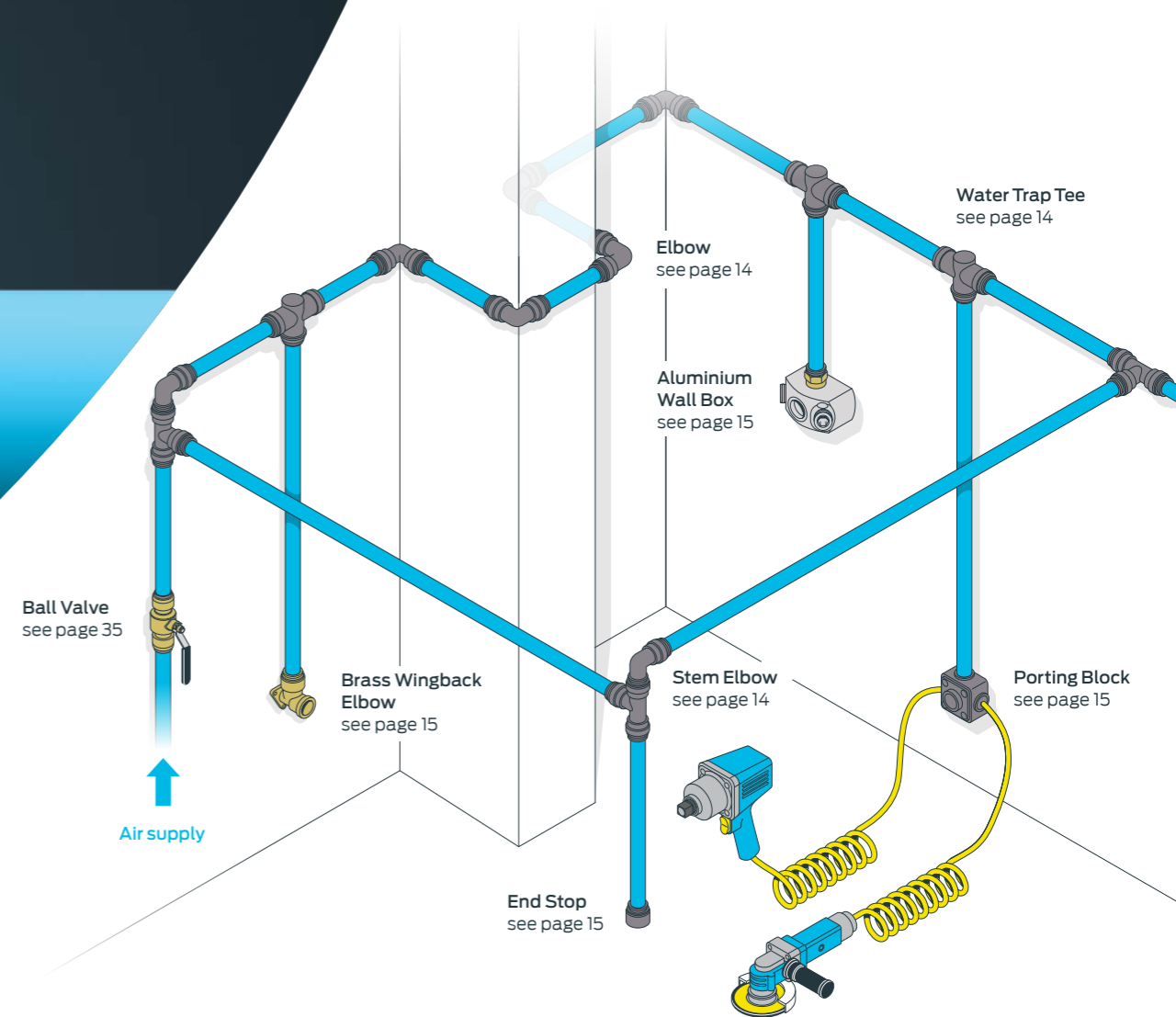
Inside John Guest **technology**

John Guest push-fit fittings use grip and seal technology. The collet with stainless steel teeth grips the pipe and the O-Ring provides an airtight seal.



Air system configuration

The John Guest Air & Pneumatics system offers rapid assembly from the compressor to air line, through to the complete ring main and take off points.

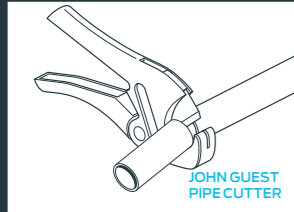


Fitting the Future™

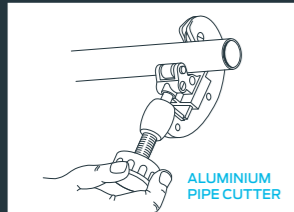
Making a connection

Connecting push-fit

Cutting the pipe

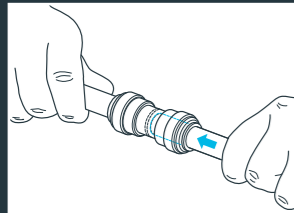


Cut the pipe square. Ideally use a John Guest pipe cutter for rigid nylon pipe and aluminium pipe cutters for aluminium pipe. To avoid damage to the O-Ring remove any burrs and sharp edges.



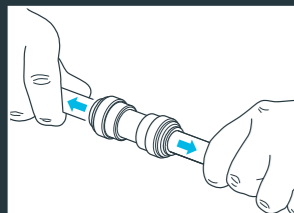
ALUMINIUM PIPE CUTTER

Making the push-fit connection



Push the pipe up to the pipe stop.

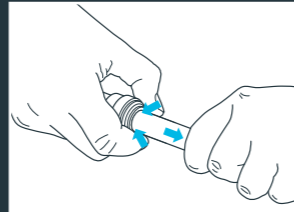
Check the connection is secure



Pull to check a secure connection is made. Test the system before use.

Demounting push-fit

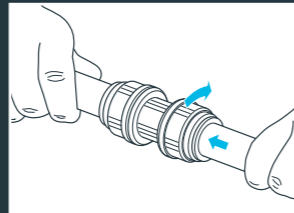
Demounting push-fit fittings



To disconnect, ensure the system is depressurised. Push the collet towards the fitting and remove the pipe. Fittings are reusable.

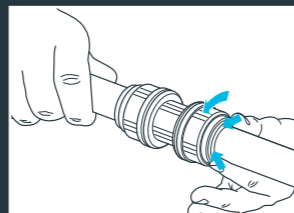
Connecting and demounting screw cap

Connecting screw cap fittings



After inserting the pipe, a 1/4 turn of the screw cap locks the collet in place and reduces lateral and sideways movement of the pipe.

Demounting screw cap fittings



To disconnect, 1/4 turn the screw cap, push the collet and remove the pipe. Fittings are reusable.



Nylon, aluminium and copper pipe

Whilst we recommend the use of John Guest Rigid Nylon Pipe, John Guest fittings can also be used with copper or aluminium pipe.



Air ring main Fittings

Straight Adaptor (BSP thread)



Part number	Pipe OD	Thread BSP	Bag qty	Box qty
PM011213E	12	x 3/8	10	150
PM011214E	12	x 1/2	10	150
PM011513E	15	x 3/8	10	150
PM011514E	15	x 1/2	10	150
PM011516E*	15	x 3/4	10	50
PM011814E	18	x 1/2		70
PM012216E	22	x 3/4		50
PM012818E	28	x 1		30

*No thread seal.

Equal Elbow



Part number	Pipe OD	Bag qty	Box qty
PM0312E	12	10	100
PM0315E	15	10	50
PM0318E	18	5	50
PM0322E	22	5	30
PM0328E	28		20

Straight Connector



Part number	Pipe OD	Bag qty	Box qty
PM0412E	12	10	100
PM0415E	15	10	100
PM0418E	18	10	50
PM0422E	22	10	50
PM0428E	28		25

Equal Tee



Part number	Pipe OD	Bag qty	Box qty
PM0212E	12	10	50
PM0215E	15	5	50
PM0218E	18	5	30
PM0222E	22	5	20
PM0228E	28		10

Reducing Tee



Part number	Pipe OD Ends	Pipe OD Branch	Bag qty	Box qty
PM3018AE	18	15	5	30
PM3022AE	22	15	5	20

Stem Adaptor (BSP thread)



Part number	Stem OD	Thread BSP	Bag qty	Box qty
PM051213E	12	x 3/8	10	200
PM051214E	12	x 1/2	10	150
PM051513E	15	x 3/8	10	150
PM051514E	15	x 1/2	10	100
PM051814E	18	x 1/2	10	100
PM052214E	22	x 1/2	10	100
PM052216E	22	x 3/4	10	50

Converts push-fit ends to male thread.

Two-Way Divider



Part number	Pipe OD	Bag qty	Box qty
PM2315E	15	5	50

Reducer



Part number	Stem OD	Pipe OD	Bag qty	Box qty
PM061510E	15	- 10	10	200
PM061512E	15	- 12	10	100
PM061815E	18	- 15	10	100
PM062215E	22	- 15	10	50
PM062218E	22	- 18	10	50
PM062815E	28	- 15	10	50
PM062822E	28	- 22		50

Stem Elbow



Part number	Pipe OD	Stem OD	Bag qty	Box qty
PM221212E	12	- 12	10	100
PM221515E	15	- 15	10	100
PM221818E	18	- 18	5	50
PM222222E	22	- 22		50

Provides a swivel-type connector.

Water Trap Tee



Part number	Pipe OD Ends	Bag qty	Box qty
PMTT22E	22	5	20

The easy alternative to installing a 'Swan Neck'.

U-Bend



Part number	Pipe OD	Bag qty	Box qty
PMUB15E	15	10	50

End Stop



Part number	Pipe OD	Bag qty	Box qty
PM4612E	12	10	250
PM4615E	15	10	200
PM4618E	18	10	100
PM4622E	22	5	80

Porting Block



Part number	Size	Bag qty	Box qty
JG-L-WSK	5 x 1/2 connections	1	10
JG-L-WSK-L	5 x 1/2 connections		100

Supplied with blanking plugs.

Aluminium Wall Box



Part number	Size	Bag qty	Box qty
JGWALLBOX 1/2	1/2	1	10
JGWALLBOX 3/4	3/4	1	10

1/2 or 3/4 female thread on the top. Both products have 3 x 1/2 female threads on the side. Supplied with blanking plugs.

Brass Wingback Elbow (BSP thread)



Part number	Pipe OD	Thread BSP	Box qty
PM15WB	15	x 1/2	20
PM22WB	22	x 3/4	10

Brass Straight Adaptor (BSP thread)



Part number	Pipe OD	Thread BSP	Bag qty	Box qty
MM011504N	15	x 1/2	5	100
MM012206N	22	x 3/4	10	50
MM012808N	28	x 1	5	20

Male Brass Stem Adaptor



Part number	Stem OD	Thread	Bag qty	Box qty
BSPT				
MM051504N	15	x 1/2	10	100
MM052206N	22	x 3/4	10	50
BSP				
MM052818N	28	x 1	10	20
NPT				
MM052226N	22	x 3/4	10	50
MM052228N	22	x 1	10	30
MM052828N	28	x 1	10	20

Converts push-fit ends to male thread.

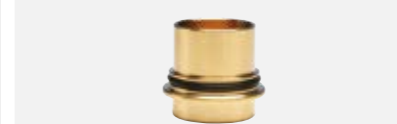
Female Brass Stem Adaptor (BSP thread)



Part number	Stem OD	Thread BSP	Bag qty	Box qty
MM051514N	15	x 1/2	10	100
MM052216N	22	x 3/4	10	50

Converts push-fit ends to female thread.

Water Trap Tee Converter



Part number	Size	Bag qty	Box qty
WTC28	28	1	50

Converts a 28mm Tee to a Water Trap Tee.

Plug



Part number	Stem OD	Colour	Bag qty	Box qty
PM0812R	12	Red	10	300
PM0815E	15	Black	10	200
PM0818E	18	Black	10	100
PM0822E	22	Black	10	100
PM0828E	28	Black	10	50

Release Aid



Part number	Pipe OD	Bag qty	Box qty
15RA	15	10	500
22RA	22	10	400
28RA	28	10	300

Collet Covers



Part number	Pipe OD	Colour	Bag qty	Box qty
PM1912E	12	Black	10	500
PM1915E	15	Black	100	400
PM1918E	18	Black	10	200
PM1922E	22	Black	50	200

Pipe Clips & Spacers



Part number	Pipe OD	Colour	Bag qty	Box qty
-------------	---------	--------	---------	---------

Clip				
PC15E	15	Black	50	200
PC22E	22	Black	50	100
PC28E	28	Black	20	80
Spacer				
PCSE		Black	50	400

Air ring main Pipe

Rigid Nylon Pipe



Part number	Size mm x m	Pack qty
PA-RM1209-3M-20B	12 x 3	20
PA-RM1512-3M-20B	15 x 3	20
PA-RM1814-3M-20B	18 x 3	20
PA-RM2218-3M-20B	22 x 3	20
PA-RM2823-3M-10B	28 x 3	10

Powder Coated Aluminium Pipe



Part number	Size mm x m	Pack qty
AL-RM1513-3M-20B	15 x 3	20
AL-RM1816-3M-20B	18 x 3	20
AL-RM2220-3M-20B	22 x 3	20
AL-RM2826-3M-10B	28 x 3	10

Aluminium Pipe Cutter



Part number	Pipe OD	Qty
JG-AL-CUTTER15	15	1
JG-AL-CUTTER18	18	1
JG-AL-CUTTER22	22	1
JG-AL-CUTTER28	28	1

Deburring Tool



Part number	Qty
JG-DEBURR	1

Air & pneumatics Miniature fittings

As well as standard push-fit connections and fittings that work with specific threads, we offer selected fittings with SuperThread technology that enables them to be used with any thread type.

LM fittings are suitable for use with plastic (Polyethylene, Nylon and Polyurethane) and soft metal (copper and mild steel) pipes with an outside diameter of 4mm +0.05/-0.07. The pipe must have a smooth outer surface and be free from burrs.

Tube inserts should be used for soft or thin wall pipe or when using Polyurethane pipe above 10 bar to a maximum of 16 bar.

M3 and M5 threaded ends are designed to be hand tightened. They should not be tightened above the maximum torque figures shown in our Technical Specification.

Straight Adaptor (metric thread)



Part number	Pipe OD	Thread metric	Bag qty	Box qty
LM0103M3	3	x M3	10	500
LM0104M3	4	x M3	10	300
LM0104M5	4	x M5	10	300

Straight Adaptor (SuperThread)



Part number	Pipe OD	Super Thread	Bag qty	Box qty
LM010411	4	x 1/8	10	300

With integral seal. Thread can be used with BSP, BSPT, NPT, PF and PT.

Equal Straight Connector



Part number	Pipe OD	Bag qty	Box qty
LM0403E	3	10	300
LM0404E	4	10	300

Equal Elbow



Part number	Pipe OD	Bag qty	Box qty
LM0303E	3	10	300
LM0304E	4	10	300

Swivel Elbow (metric thread)



Part number	Pipe OD	Thread metric	Bag qty	Box qty
LM0903M3	3	x M3	10	500
LM0904M3	4	x M3	10	500
LM0904M5	4	x M5	10	500

Equal Tee



Part number	Pipe OD	Bag qty	Box qty
LM0203E	3	10	200
LM0204E	4	10	200

Metric fittings

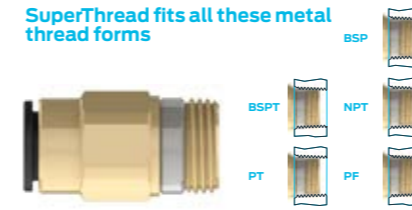
As well as standard push-fit connections and metric fittings that work with specific threads, we offer selected fittings with SuperThread technology that enables them to be used with any thread type.

The special Polyurethane seal feature means no sealant need be applied to make an airtight joint. There is no danger of tape entering the system.

Fittings with SuperThread also have countersunk throughbores to provide superior flow characteristics.

The design allows for a smaller compact body and reduced hexagon size.

SuperThread fits all these metal thread forms



Straight Adaptor (SuperThread)



Part number	Pipe OD	Super Thread	Bag qty	Box qty
RM010411	4	x 1/8	10	500
RM010412	4	x 1/4	10	300
RM010511	5	x 1/8	10	300
RM010512	5	x 1/4	10	500
RM010611	6	x 1/8	10	400
RM010612	6	x 1/4	10	500
RM010811	8	x 1/8	10	500
RM010812	8	x 1/4	10	500
RM010813	8	x 3/8	10	400
RM011012	10	x 1/4	10	300
RM011013	10	x 3/8	10	300
RM011014	10	x 1/2	10	200
RM011213	12	x 3/8	10	150
RM011214	12	x 1/2	10	150

With integral seal. Thread can be used with BSP, BSPT, NPT, PF and PT.

Straight Adaptor (metric thread)



Part number	Pipe OD	Thread metric	Bag qty	Box qty
RM0104M5	4	x M5	10	500
RM0105M5	5	x M5	10	500
RM0106M5	6	x M5	10	300

Brass Straight Adaptor (BSP thread)



Part number	Pipe OD	Thread BSP	Bag qty	Box qty
MM010411	4	x 1/8	10	500
MM010611	6	x 1/8	10	400
MM010612	6	x 1/4	10	500
MM010812	8	x 1/4	10	500

Straight Adaptor (BSP thread)



Part number	Pipe OD	Thread BSP	Bag qty	Box qty
PM010411E	4	x 1/8	10	500
PM010412E	4	x 1/4	10	500
PM010511E	5	x 1/8	10	500
PM010512E	5	x 1/4	10	500
PM010611E	6	x 1/8	10	500
PM010612E	6	x 1/4	10	500
PM010811E	8	x 1/8	10	400
PM010812E	8	x 1/4	10	400
PM010813E	8	x 3/8	10	300
PM011012E	10	x 1/4	10	250
PM011013E	10	x 3/8	10	250
PM011014E	10	x 1/2	10	200
PM011213E	12	x 3/8	10	150
PM011214E	12	x 1/2	10	150

Straight Adaptor (BSPT thread)



Part number	Pipe OD	Thread BSPT	Bag qty	Box qty
PM010401E	4	x 1/8	10	500
PM010402E	4	x 1/4	10	500
PM010501E	5	x 1/8	10	500
PM010502E	5	x 1/4	10	500
PM010601E	6	x 1/8	10	500
PM010602E	6	x 1/4	10	500
PM010801E	8	x 1/8	10	400
PM010802E	8	x 1/4	10	400
PM010803E	8	x 3/8	10	300
PM010804E	8	x 1/2	10	200
PM011002E	10	x 1/4	10	250
PM011003E	10	x 3/8	10	250
PM011004E	10	x 1/2	10	200
PM011203E	12	x 3/8	10	150
PM011204E	12	x 1/2	10	150

Straight Adaptor (NPTF thread)



Part number	Pipe OD	Thread NPTF	Bag qty	Box qty
PM010622E	6	x 1/4	10	500

Equal Straight Connector



Part number	Pipe OD	Bag qty	Box qty
RM0404E	4	10	500
RM0405E	5	10	500
RM0406E	6	10	500
RM0408E	8	10	300
RM0410E	10	10	200
RM0412E	12	10	100

Equal Straight Connector



Part number	Pipe OD	Bag qty	Box qty
PM0404E	4	10	500
PM0405E	5	10	500
PM0406E	6	10	400
PM0408E	8	10	300
PM0410E	10	10	200
PM0412E	12	10	100

Reducing Straight Connector



Part number	Pipe OD	Pipe OD	Bag qty	Box qty
PM200604E	6	- 4	10	400
PM200804E	8	- 4	10	300
PM200806E	8	- 6	10	200
PM201004E	10	- 4	10	200
PM201006E	10	- 6	10	200
PM201008E	10	- 8	10	200
PM201208E	12	- 8	10	100
PM201210E	12	- 10	10	100

Air & pneumatics

Metric fittings

Equal Elbow



Part number	Pipe OD	Bag qty	Box qty
RM0304E	4	10	500
RM0305E	5	10	500
RM0306E	6	10	400
RM0308E	8	10	400
RM0310E	10	10	200
RM0312E	12	10	100

Equal Elbow



Part number	Pipe OD	Bag qty	Box qty
PM0304E	4	10	500
PM0305E	5	10	500
PM0306E	6	10	400
PM0308E	8	10	300
PM0310E	10	10	200
PM0312E	12	10	100

Reducing Elbow Connector



Part number	Pipe OD	Pipe OD	Bag qty	Box qty
PM210604E	6	4	10	400
PM210804E	8	4	10	300
PM210806E	8	6	10	200
PM211004E	10	4	10	200
PM211006E	10	6	10	200
PM211008E	10	8	10	200
PM211208E	12	8	10	100
PM211210E	12	10	10	100

Stem Elbow



Part number	Pipe OD	Stem OD	Bag qty	Box qty
PM220404E	4	4	10	500
PM220505E	5	5	10	500
PM220606E	6	6	10	500
PM220808E	8	8	10	400
PM221010E	10	10	10	200
PM221212E	12	12	10	100

Swivel Elbow (SuperThread)



Part number	Pipe OD	Super Thread	Bag qty	Box qty
RM090411	4	x 1/8	10	500
RM090412	4	x 1/4	10	200
RM090611	6	x 1/8	10	400
RM090612	6	x 1/4	10	400
RM090811	8	x 1/8	10	400
RM090812	8	x 1/4	10	300
RM091012	10	x 1/4	10	200
RM091013	10	x 3/8	10	200
RM091213	12	x 3/8	10	100
RM091214	12	x 1/2	10	100

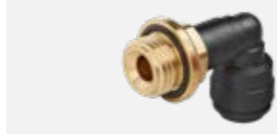
With integral seal. Thread can be used with BSP, BSPT, NPT, PF and PT.

Swivel Elbow (metric thread)



Part number	Pipe OD	Thread metric	Bag qty	Box qty
RM0904M5	4	x M5	10	500
RM0906M5	6	x M5	10	500

Swivel Elbow (BSP thread)



Part number	Pipe OD	Thread BSP	Bag qty	Box qty
MM090611	6	x 1/8	10	400
MM090612	6	x 1/4	10	400
MM090812	8	x 1/4	10	300

With plastic body, brass parallel thread and O-Ring thread seal.

Swivel Elbow (BSP thread)



Part number	Pipe OD	Thread BSP	Box qty
PM090411E	4	x 1/8	400
PM090412E	4	x 1/4	200
PM090511E	5	x 1/8	400
PM090512E	5	x 1/4	200
PM090611E	6	x 1/8	200
PM090612E	6	x 1/4	200
PM090811E	8	x 1/8	200
PM090812E	8	x 1/4	200
PM090813E	8	x 3/8	200
PM091012E	10	x 1/4	100
PM091013E	10	x 3/8	100
PM091014E	10	x 1/2	100
PM091213E	12	x 3/8	50
PM091214E	12	x 1/2	50

Swivel Elbow (BSPT thread)



Part number	Pipe OD	Thread BSPT	Box qty
PM090401E	4	x 1/8	400
PM090402E	4	x 1/4	200
PM090501E	5	x 1/8	400
PM090502E	5	x 1/4	200
PM090601E	6	x 1/8	200
PM090602E	6	x 1/4	200
PM090801E	8	x 1/8	200
PM090802E	8	x 1/4	200
PM090803E	8	x 3/8	200
PM091002E	10	x 1/4	100
PM091003E	10	x 3/8	100
PM091004E	10	x 1/2	100
PM091203E	12	x 3/8	50
PM091204E	12	x 1/2	50

Equal Tee



Part number	Pipe OD	Bag qty	Box qty
RM0204E	4	10	500
RM0205E	5	10	300
RM0206E	6	10	300
RM0208E	8	10	200
RM0210E	10	10	100
RM0212E	12	10	50

Equal Tee



Part number	Pipe OD	Bag qty	Box qty
PM0204E	4	10	400
PM0205E	5	10	400
PM0206E	6	10	300
PM0208E	8	10	200
PM0210E	10	10	100
PM0212E	12	10	50

Swivel Tee (centre leg BSP thread)



Part number	Pipe OD	Thread BSP	Box qty
PM100411E	4	x 1/8	200
PM100512E	5	x 1/4	200
PM100611E	6	x 1/8	200
PM100612E	6	x 1/4	200
PM100811E	8	x 1/8	100
PM100812E	8	x 1/4	100
PM100813E	8	x 3/8	100
PM101012E	10	x 1/4	100
PM101013E	10	x 3/8	100
PM101014E	10	x 1/2	50
PM101213E	12	x 3/8	50
PM101214E	12	x 1/2	50

Swivel Tee (centre leg BSPT thread)



Part number	Pipe OD	Thread BSPT	Box qty
PM100402E	4	x 1/4	200
PM100502E	5	x 1/4	200
PM100601E	6	x 1/8	200
PM100602E	6	x 1/4	200
PM100801E	8	x 1/8	100
PM100802E	8	x 1/4	100
PM101002E	10	x 1/4	100
PM101003E	10	x 3/8	100
PM101004E	10	x 1/2	100
PM101204E	12	x 1/2	50

Swivel Male Run Tee (BSP thread)



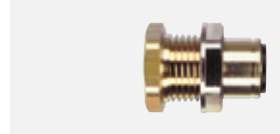
Part number	Pipe OD	Thread BSP	Box qty
PM110411E	4	x 1/8	200
PM110412E	4	x 1/4	200
PM110611E	6	x 1/8	200
PM110612E	6	x 1/4	200
PM110811E	8	x 1/8	100
PM110812E	8	x 1/4	100
PM110813E	8	x 3/8	100
PM111012E	10	x 1/4	100
PM111013E	10	x 3/8	100
PM111014E	10	x 1/2	50
PM111213E	12	x 3/8	50

Swivel Male Run Tee (BSPT thread)



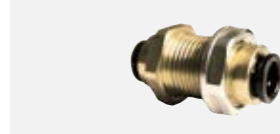
Part number	Pipe OD	Thread BSPT	Box qty
PM110401E	4	x 1/8	200
PM110602E	6	x 1/4	200
PM110802E	8	x 1/4	100
PM110803E	8	x 3/8	100
PM111002E	10	x 1/4	100
PM111003E	10	x 3/8	100

Brass Bulkhead Adaptor



Part number	Pipe OD	Bag qty	Box qty
RM070612	6	10	200
RM070812	8	10	200

Bulkhead Connector



Part number	Pipe OD	Bag qty	Box qty
RM1206	6	10	200
RM1208	8	10	200

Bulkhead Connector



Part number	Pipe OD	Bag qty	Box qty
PM1204E	4	10	200
PM1205E	5	10	200
PM1206E	6	10	200
PM1208E	8	10	100
PM1210E	10	10	100
PM1212E	12	5	50

Larger sizes

For sizes 15mm - 28mm see pages 14-15

Air & pneumatics Metric fittings

Reducer



Part number	Stem OD	Pipe OD	Bag qty	Box qty
PM060504E	5	- 4	10	500
PM060604E	6	- 4	10	500
PM060605E	6	- 5	10	500
PM060804E	8	- 4	10	500
PM060805E	8	- 5	10	500
PM060806E	8	- 6	10	500
PM061006E	10	- 6	10	400
PM061008E	10	- 8	10	400
PM061208E	12	- 8	10	300
PM061210E	12	- 10	10	250

Larger size reducers are shown on pages 14-15.

Enlarger



Part number	Stem OD	Pipe OD	Bag qty	Box qty
PM130405E	4	x 5	10	500

Stem Adaptor (SuperThread)



Part number	Pipe OD	Super Thread	Box qty
RM050612	6	x 1/4	500
RM050812	8	x 1/4	500

With integral seal. Thread can be used with BSP, BSPT, NPT, PF and PT.

Stem Adaptor (metric thread)



Part number	Pipe OD	Thread metric	Box qty
RM0504M5	4	x M5	500

Stem Adaptor (BSP thread)



Part number	Stem OD	Thread BSP	Bag qty	Box qty
PM050411E	4	x 1/8	10	500
PM050412E	4	x 1/4	10	500
PM050511E	5	x 1/8	10	500
PM050512E	5	x 1/4	10	500
PM050611E	6	x 1/8	10	500
PM050612E	6	x 1/4	10	500
PM050811E	8	x 1/8	10	500
PM050812E	8	x 1/4	10	500
PM050813E	8	x 3/8	10	300
PM051012E	10	x 1/4	10	300
PM051013E	10	x 3/8	10	300
PM051014E	10	x 1/2	10	200
PM051213E	12	x 3/8	10	200
PM051214E	12	x 1/2	10	150

Stem Adaptor (BSPT thread)



Part number	Stem OD	Thread BSPT	Bag qty	Box qty
PM050401E	4	x 1/8	10	500
PM050402E	4	x 1/4	10	500
PM050501E	5	x 1/8	10	500
PM050502E	5	x 1/4	10	500
PM050601E	6	x 1/8	10	500
PM050602E	6	x 1/4	10	500
PM050801E	8	x 1/8	10	500
PM050802E	8	x 1/4	10	500
PM050803E	8	x 3/8	10	300
PM051002E	10	x 1/4	10	300
PM051003E	10	x 3/8	10	300
PM051004E	10	x 1/2	10	200
PM051203E	12	x 3/8	10	200
PM051204E	12	x 1/2	10	150

Two-Way Divider



Part number	Pipe OD	Bag qty	Box qty
RM2306E	6	10	300
RM2308E	8	10	250
RM2312E	12	10	50

Two-Way Divider



Part number	Pipe OD	Bag qty	Box qty
PM2304E	4	10	300
PM2308E	8	10	100
PM2310E	10	10	100

Tube To Hose Stem



Part number	Stem OD	Hose ID	Bag qty	Box qty
PM250604E	6	- 4	10	500
PM250806E	8	- 6	10	500
PM251008E	10	- 8	10	300

Female Adaptor (BSP thread)



Part number	Pipe OD	Thread BSP	Bag qty	Box qty
PM450411E*	4	x 1/8	10	500
PM450611E	6	x 1/8	10	500
PM450612E*	6	x 1/4	10	300
PM450812E*	8	x 1/4	10	300
PM450813E*	8	x 3/8	10	200
PM451015FE*	10	x 5/8	10	100
PM451215FE*	12	x 5/8	10	150

*With thread seal. Other size no seal.

Banjo Flow Control

Banjo Flow Controls are designed for installation directly into cylinder ports to give precise control. They regulate the speed of pneumatic cylinders and other actuators.

John Guest Controls provide a neat compact assembly which can be orientated to a suitable position for the circuit arrangement prior to tightening. The design offers especially precise adjustment through the control needle which is captive within its housing.

Suitable for both soft metal and plastic tubing.

Technical Specifications

Temperature range 5°C - 70°C
Working pressure range 0.5 bar to 10 bar
Materials used Acetal Copolymer, Brass, Stainless Steel and Nitrile.
Filtration Air supply should be filtered to 50 micron.



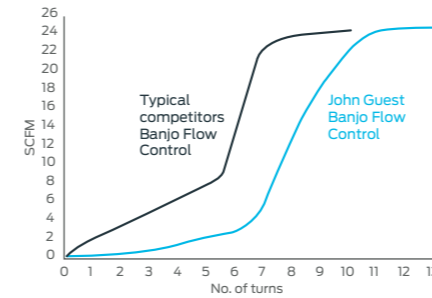
Typical Response Curve

Response curve for Banjo Flow Control with screwdriver slot.

Pattern no. BFC360611E

1 scfm = 28.3 litres/min. or 28317 cc/min. @ 1 atmosphere discharge

For 6mm x 1/8 BSP Banjo Flow Control



Banjo Flow Control (manual adjustment)



Part number	Pipe OD	Thread	Bag qty	Box qty
CFM3604M5E	4	x M5	1	200
CFM360611E	6	x 1/8 BSP	1	100
CFM360612E	6	x 1/4 BSP	1	100
CFM360812E	8	x 1/4 BSP	1	100

Banjo Flow Control (screwdriver slot, BSP thread)



Part number	Pipe OD	Thread BSP	Bag qty	Box qty
BFC360411E	4	x 1/8	1	100
BFC360611E	6	x 1/8	1	100
BFC360612E	6	x 1/4	1	50
BFC360812E	8	x 1/4	1	100
BFC361013E	10	x 3/8	1	50
BFC361214E	12	x 1/2	1	50

Miniature Banjo Flow Control (screwdriver slot, metric thread)



Part number	Pipe OD	Thread metric	Bag qty	Box qty
LM1503M3E	3	x M3	10	1000

Imperial fittings

Imperial fittings offered in sizes 5/32" to 5/8" are manufactured in grey acetal copolymer, making them especially suitable for applications involving foodstuffs and potable liquids.

They are however equally suitable for air and inert gases and can be used on N2/CO2 (installed in accordance with The British Beer and Pub Association Code of Practice) mixed gas dispense lines and in pneumatic applications and vacuum.

Straight Adaptor (BSPT thread)



Part number	Pipe OD	Thread BSPT	Bag qty	Box qty
PM010401S	5/32"	x 1/8	10	500
PM010402S	5/32"	x 1/4	10	500
PI010601S	3/16"	x 1/8	10	500
PI010602S	3/16"	x 1/4	10	500
PI010801S	1/4"	x 1/8	10	500
PI010802S	1/4"	x 1/4	10	400
PM010801S	5/16"	x 1/8	10	400
PM010802S	5/16"	x 1/4	10	400
PM010803S	5/16"	x 3/8	10	300
PI011202S	3/8"	x 1/4	10	250
PI011203S	3/8"	x 3/8	10	250
PI011603S	1/2"	x 3/8	10	150
PI011604S	1/2"	x 1/2	10	150

Straight Adaptor (BSP thread)



Part number	Pipe OD	Thread BSP	Bag qty	Box qty
PI010812S	1/4"	x 1/4	10	250
PI011212S	3/8"	x 1/4	10	250
PI011213S	3/8"	x 3/8	10	250
PI011613S	1/2"	x 3/8	10	150

For use with spot face ports.

Straight Adaptor (BSP thread)



Part number	Pipe OD	Thread BSP	Bag qty	Box qty
NCPI011211S	3/8"	x 1/8	10	200
NCPI011212S	3/8"	x 1/4	10	250

With special large seal for use with chamfered face ports.

Air & pneumatics Imperial fittings

Straight Adaptor (NPTF thread)



Part number	Pipe OD	Thread NPTF	Bag qty	Box qty
PM010421S	5/32" x	1/8	10	500
PM010422S	5/32" x	1/4	10	500
PI010621S	3/16" x	1/8	10	500
PI010821S	1/4" x	1/8	10	500
PI010822S	1/4" x	1/4	10	400
PI010823S	1/4" x	3/8	10	300
PM010821S	5/16" x	1/8	10	400
PM010822S	5/16" x	1/4	10	400
PM010823S	5/16" x	3/8	10	300
PI011221S	3/8" x	1/8	10	250
PI011222S	3/8" x	1/4	10	250
PI011223S	3/8" x	3/8	10	250
PI011224S	3/8" x	1/2	10	200
PI011623S	1/2" x	3/8	10	150
PI011624S	1/2" x	1/2	10	150
PI012026S	5/8" x	3/4	10	100

Equal Straight Connector



Part number	Pipe OD	Bag qty	Box qty
PM0404S	5/32"	10	500
PI0406S	3/16"	10	500
PI0408S	1/4"	10	400
PM0408S	5/16"	10	300
PI0412S	3/8"	10	200
PI0416S	1/2"	10	100

Reducing Straight Connector



Part number	Pipe OD	Pipe OD	Bag qty	Box qty
PI200806S	1/4"	3/16"	10	200
PM200804S	5/16"	5/32"	10	300
PI201006S	5/16"	3/16"	10	200
PI201008S	5/16"	1/4"	10	200
PI201206S	3/8"	3/16"	10	200
PI201208S	3/8"	1/4"	10	200
PI201210S	3/8"	5/16"	10	200
PI201212S	3/8"	3/8"	10	200
PI201608S	1/2"	1/4"	10	200
PI201610S	1/2"	5/16"	10	100
PI201612S	1/2"	3/8"	10	100

Equal Elbow



Part number	Pipe OD	Bag qty	Box qty
PM0304S	5/32"	10	500
PI0306S	3/16"	10	500
PI0308S	1/4"	10	400
PM0308S	5/16"	10	300
PI0312S	3/8"	10	200
PI0316S	1/2"	10	100

Reducing Elbow



Part number	Pipe OD	Pipe OD	Bag qty	Box qty
PM210804S	5/16"	5/32"	10	300
PI211006S	5/16"	3/16"	10	200
PI211008S	5/16"	1/4"	10	200
PI211206S	3/8"	3/16"	10	200
PI211208S	3/8"	1/4"	10	200
PI211210S	3/8"	5/16"	10	200
PI211610S	1/2"	5/16"	10	100
PI211612S	1/2"	3/8"	10	100

Stem Elbow



Part number	Stem OD	Pipe OD	Bag qty	Box qty
PM220404S	5/32"	5/32"	10	500
PI220606S	3/16"	3/16"	10	500
PI220808S	1/4"	1/4"	10	500
PM220808S	5/16"	5/16"	10	400
PI221206S	3/8"	3/16"	10	300
PI221208S	3/8"	1/4"	10	300
PI221210S	3/8"	5/16"	10	200
PI221212S	3/8"	3/8"	10	200
PI221616S	1/2"	1/2"	10	100

Swivel Elbows/Tees and pre-assembled Swivels

Swivel Elbows/Tees can be made up by using an Equal Elbow (page 22), Equal Tee (page 23) and the appropriate Stem Adaptor (page 24). Pre-assembled Swivels may be purchased from John Guest on request.

Rigid Elbow (NPTF thread)



Part number	Pipe OD	Thread NPTF	Bag qty	Box qty
PI480821S	1/4" x	1/8	10	500
PI480822S	1/4" x	1/4	10	400
PI480823S	1/4" x	3/8	10	300
PI481022S	5/16" x	1/4	10	300
PI481023S	5/16" x	3/8	10	300
PI481222S	3/8" x	1/4	10	200
PI481223S	3/8" x	3/8	10	200
PI482024S	5/8" x	1/2	10	100

Swivel Elbow (BSPT thread)



Part number	Pipe OD	Thread BSPT	Bag qty	Box qty
PI090601S	3/16" x	1/8	10	200
PI090801S	1/4" x	1/8	10	200
PI090802S	1/4" x	1/4	10	200
PM090801S	5/16" x	1/8	10	200
PM090802S	5/16" x	1/4	10	200
PM090803S	5/16" x	3/8	10	200
PI091202S	3/8" x	1/4	10	100
PI091203S	3/8" x	3/8	10	100
PI091603S	1/2" x	3/8	10	50
PI091604S	1/2" x	1/2	10	50

Swivel Elbow (NPTF thread)



Part number	Pipe OD	Thread NPTF	Bag qty	Box qty
PM090421S	5/32" x	1/8	10	400
PM090422S	5/32" x	1/4	10	200
PI090621S	3/16" x	1/8	10	200
PI090821S	1/4" x	1/8	10	200
PI090822S	1/4" x	1/4	10	200
PM090821S	5/16" x	1/8	10	200
PM090822S	5/16" x	1/4	10	200
PM090823S	5/16" x	3/8	10	200
PI091222S	3/8" x	1/4	10	100
PI091223S	3/8" x	3/8	10	100
PI091623S	1/2" x	3/8	10	50
PI091624S	1/2" x	1/2	10	50

Equal Tee



Part number	Pipe OD	Bag qty	Box qty
PM0204S	5/32"	10	400
PI0206S	3/16"	10	400
PI0208S	1/4"	10	300
PM0208S	5/16"	10	200
PI0212S	3/8"	10	100
PI0216S	1/2"	10	50

Reducing Tee



Part number	Pipe OD Ends	Pipe OD Branch	Bag qty	Box qty
PI301208S	3/8" -	1/4"	10	150
PI301612S	1/2" -	3/8"	10	50

Swivel Male Run Tee (BSPT thread)



Part number	Pipe OD	Thread BSPT	Bag qty	Box qty
PI110801S	1/4" x	1/8	10	200
PI110802S	1/4" x	1/4	10	200
PM110801S	5/16" x	1/8	10	100
PM110802S	5/16" x	1/4	10	100
PM110803S	5/16" x	3/8	10	100
PI111202S	3/8" x	1/4	10	100
PI111203S	3/8" x	3/8	10	100
PI111603S	1/2" x	3/8	5	50
PI111604S	1/2" x	1/2	5	50

Swivel Male Run Tee (NPTF thread)



Part number	Pipe OD	Thread NPTF	Bag qty	Box qty
PI110621S	3/16" x	1/8	10	200
PI110821S	1/4" x	1/8	10	200
PI110822S	1/4" x	1/4	10	200
PI111222S	3/8" x	1/4	10	100
PI111223S	3/8" x	3/8	10	100

Swivel Branch Tee (BSPT thread)



Part number	Pipe OD	Thread BSPT	Bag qty	Box qty
PI100601S	3/16" x	1/8	10	200
PI100801S	1/4" x	1/8	10	200
PI100802S	1/4" x	1/4	10	200
PM100801S	5/16" x	1/8	10	100
PM100802S	5/16" x	1/4	10	100
PM100803S	5/16" x	3/8	10	100
PI101202S	3/8" x	1/4	10	100
PI101203S	3/8" x	3/8	10	100
PI101603S	1/2" x	3/8	5	50
PI101604S	1/2" x	1/2	5	50

Swivel Branch Tee (NPTF thread)



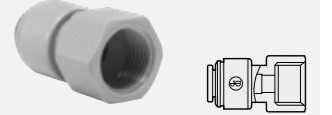
Part number	Pipe OD	Thread NPTF	Bag qty	Box qty
PM100421S	5/32" x	1/8	10	200
PM100422S	5/32" x	1/4	10	200
PI100621S	3/16" x	1/8	10	200
PI100821S	1/4" x	1/8	10	200
PI100822S	1/4" x	1/4	10	200
PM100821S	5/16" x	1/8	10	100
PM100822S	5/16" x	1/4	10	100
PM100823S	5/16" x	3/8	10	100
PI101222S	3/8" x	1/4	10	100
PI101223S	3/8" x	3/8	10	100
PI101623S	1/2" x	3/8	5	50
PI101624S	1/2" x	1/2	5	50

Female Adaptor (BSP thread - Flat end)



Part number	Pipe OD	Thread BSP	Bag qty	Box qty
PI451014FS	5/16" x	1/2	10	150
PI451015FS	5/16" x	5/8	10	150
PI451213S	3/8" x	3/8	10	150
PI451214FS	3/8" x	1/2	10	150
PI451215FS	3/8" x	5/8	10	150
PI451613S	1/2" x	3/8	10	150
PI451615FS	1/2" x	5/8	10	150

Female Adaptor (NPTF thread)



Part number	Pipe OD	Thread NPTF	Bag qty	Box qty
PI450822S	1/4" x	1/4	10	400
PI451222S	3/8" x	1/4	10	250

Three-Way Divider



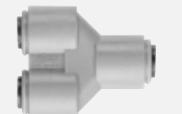
Part number	Pipe OD Inlet	Pipe OD Outlet	Bag qty	Box qty
PI491612S	1/2"	3/8"	10	50
PI491616S	1/2"	1/2"	5	40

Two-Way Divider



Part number	Pipe OD	Bag qty	Box qty
PI2308S	1/4"	10	150
PM2308S	5/16"	10	100
PI2312S	3/8"	10	100
PI2316S	1/2"	5	100

Unequal Two-Way Divider



Part number	Pipe OD Inlet	Pipe OD Outlet	Bag qty	Box qty
PI241210S	3/8"	5/16"	10	100

Larger sizes

For sizes 15mm - 28mm see pages 14-15

Air & pneumatics Imperial fittings

Bulkhead Connector



Part number	Pipe OD	Bag qty	Box qty
PM1204S	5/32"	10	200
PI1206S	3/16"	10	200
PI1208S	1/4"	10	200
PM1208S	5/16"	10	100
PI1212S	3/8"	10	100
PI1216S	1/2"	5	50

Reducing Bulkhead Connector



Part number	Pipe OD	Pipe OD	Bag qty	Box qty
PM121208S	3/8"	1/4"	10	150

Stem Adaptor (BSPT thread)



Part number	Stem OD	Thread BSP	Bag qty	Box qty
PI050601S	3/16" x	1/8"	10	500
PI050801S	1/4" x	1/8"	10	500
PI050802S	1/4" x	1/4"	10	500
PM050801S	5/16" x	1/8"	10	500
PM050802S	5/16" x	1/4"	10	500
PM050803S	5/16" x	3/8"	10	300
PI051202S	3/8" x	1/4"	10	300
PI051203S	3/8" x	3/8"	10	300
PI051603S	1/2" x	3/8"	10	200
PI051604S	1/2" x	1/2"	10	150

Stem Adaptor (BSP thread)



Part number	Stem OD	Thread BSP	Bag qty	Box qty
PM050812S	5/16" x	1/4"	10	500
PI051212S	3/8" x	1/4"	10	300
PI051213S	3/8" x	3/8"	10	300

Stem Adaptor (NPTF thread)



Part number	Pipe OD	Thread NPTF	Bag qty	Box qty
PM050421S	5/32" x	1/8"	10	500
PM050422S	5/32" x	1/4"	10	500
PI050621S	3/16" x	1/8"	10	500
PI050821S	1/4" x	1/8"	10	500
PI050822S	1/4" x	1/4"	10	500
PI050823S	1/4" x	3/8"	10	300
PM050821S	5/16" x	1/8"	10	500
PM050822S	5/16" x	1/4"	10	500
PM050823S	5/16" x	3/8"	10	300
PI051222S	3/8" x	1/4"	10	300
PI051223S	3/8" x	3/8"	10	300
PI051623S	1/2" x	3/8"	10	150
PI051624S	1/2" x	1/2"	10	150

Reducer



Part number	Stem OD	Pipe OD	Bag qty	Box qty
PI060605S	3/16" -	5/32"	10	500
PI061006S	5/16" -	3/16"	10	500
PI061008S	5/16" -	1/4"	10	500
PI061206S	3/8" -	3/16"	10	500
PI061208S	3/8" -	1/4"	10	400
PI061210S	3/8" -	5/16"	10	400
PI061610S	1/2" -	5/16"	10	300
PI061612S	1/2" -	3/8"	10	250

Enlarger



Part number	Stem OD	Pipe OD	Bag qty	Box qty
PI131012S	5/16" -	3/8"	10	250
PI131216S	3/8" -	1/2"	10	200

Offset Connector



Part number	Pipe OD	Pipe OD	Bag qty	Box qty
NC641	1/2" -	5/16"	10	200

Cross



Part number	Pipe OD	Bag qty	Box qty
PI4712S	3/8"	10	100

U-Bend



Part number	Pipe OD	Bag qty	Box qty
PIUB12S	3/8"	10	100
PIUB16S	1/2"	10	50

The U-Bend is offered for 1/2 inch OD pipe sizes. Existing 1/2 inch ID lines can be accommodated by using a standard Tube to Hose Connector.

End Stop



Part number	Pipe OD	Bag qty	Box qty
PI4608S	1/4"	10	500
PI4612S	3/8"	10	500

Plug



Part number	Stem OD	Bag qty	Box qty
PM0804S	5/32"	10	1000
PI0806S	3/16"	10	1000
PI0808S	1/4"	10	500
PM0808S	5/16"	10	500
PI0812S	3/8"	10	400
PI0816S	1/2"	10	300

Tube to Hose Stem



Part number	Stem OD	Hose ID	Bag qty	Box qty
PI250806S	1/4" -	3/16"	10	500
PI250808S	1/4" -	1/4"	10	500
PI250810S	1/4" -	5/16"	10	500
PI251006S	5/16" -	3/16"	10	500
PI251008S	5/16" -	1/4"	10	500
PM250808S	5/16" -	5/16"	10	500
PI251012S	5/16" -	3/8"	10	400
PI251208S	3/8" -	1/4"	10	400
PI251210S	3/8" -	5/16"	10	400
PI251212S	3/8" -	3/8"	10	400
PI251216S	3/8" -	1/2"	10	300
PI251612S	1/2" -	3/8"	10	300
PI251616S	1/2" -	1/2"	10	200

Tube To Hose Elbow



Part number	Stem OD	Hose ID	Bag qty	Box qty
PI290808S	1/4" -	1/4"	10	500
PI290810S	1/4" -	5/16"	10	500
PI291008S	5/16" -	1/4"	10	500
PM290808S	5/16" -	5/16"	10	500
PI291208S	3/8" -	1/4"	10	400
PI291210S	3/8" -	5/16"	10	400

LLDPE pipe

John Guest Linear Low Density Polyethylene Pipe is suitable for a wide range of temperature and pressures, has a broad chemical compatibility and is made from non contaminating materials.

The pipe is suitable for pneumatics applications maximum pressure 10 bar @ 20°C. At elevated temperatures (50°C), mineral oil used in some systems will degrade LLDPE pipe and therefore, LLDPE pipe used in pneumatic circuits should be periodically checked and replaced if necessary.

Chemical Resistance

For use of LLDPE with chemicals or potentially aggressive liquids, please refer to our Technical Service Department.

NOTE: When using cleaning agents or other potentially aggressive liquids, please ensure compatibility with pipe and fittings. LLDPE is not recommended for mineral oils, gases and fuels or high pressure compressed air / pneumatic systems.

Exposure to Ultraviolet Light

Only black pipe should be installed in areas exposed to any light if biofilm growth is considered an issue. In this case other colours must be protected from exposure to light. Black pipe is also UV stabilised and can be installed where exposed to direct sunlight (UV).

Pipe Tolerances

1/4" to 1/2"	+0.001/-0.004"
4mm	+0.05/-0.07mm
6mm to 12mm	+0.05/-0.10mm
15mm	+0.10/-0.10mm

4mm OD x 2.5mm ID - 100mm Coils

Part number	Colour
PE-04025-0100M-N	Natural
PE-04025-0100M-B	Blue
PE-04025-0100M-R	Red
PE-04025-0100M-E	Black
PE-04025-0100M-W	White
PE-04025-0100M-G	Green
PE-04025-0100M-Y	Yellow
PE-04025-0100M-O	Orange

Products shown in blue have a minimum order quantity of 50 coils.

6mm OD x 4mm ID - 100mm Coils

Part number	Colour
PE-0604-0100M-N	Natural
PE-0604-0100M-B	Blue
PE-0604-0100M-R	Red
PE-0604-0100M-E	Black
PE-0604-0100M-W	White
PE-0604-0100M-G	Green
PE-0604-0100M-Y	Yellow
PE-0604-0100M-O	Orange

Products shown in blue have a minimum order quantity of 50 coils.

Minimum order quantities

Popular items highlighted in black are generally in stock and available in minimum order quantities of 2 coils. Items listed in blue are non-standard and are subject to minimum order quantities unless in stock and will incur longer lead time.

Imperial sizes also available on application.

8mm OD x 6mm ID - 100mm Coils

Part number	Colour
PE-0806-100M-N	Natural
PE-0806-100M-B	Blue
PE-0806-100M-R	Red
PE-0806-100M-E	Black
PE-0806-100M-W	White
PE-0806-100M-G	Green
PE-0806-100M-Y	Yellow
PE-0806-100M-O	Orange

Products shown in blue have a minimum order quantity of 100 coils.

10mm OD x 7mm ID - 100mm Coils

Part number	Colour
PE-1007-100M-N	Natural
PE-1007-100M-B	Blue
PE-1007-100M-R	Red
PE-1007-100M-E	Black
PE-1007-100M-W	White
PE-1007-100M-G	Green
PE-1007-100M-Y	Yellow
PE-1007-100M-O	Orange

Products shown in blue have a minimum order quantity of 50 coils.

12mm OD x 9mm ID - 100mm Coils

Part number	Colour
PE-1209-100M-N	Natural
PE-1209-100M-B	Blue
PE-1209-100M-R	Red
PE-1209-100M-E	Black
PE-1209-100M-G	Green
PE-1209-100M-Y	Yellow
PE-1209-100M-O	Orange

Products shown in blue have a minimum order quantity of 50 coils.

15mm OD x 11.5mm ID - 100mm Coils

Part number	Colour
PE-15115-0100M-B	Blue
PE-15115-0100M-R	Red
PE-15115-0100M-G	Green
PE-15115-0100M-E	Black

Products shown in blue have a minimum order quantity of 50 coils.

1/4" OD 0.17" ID - 500ft Coils

Part number	Colour
PE-08-BI-0500F-N	Natural
PE-08-BI-0500F-B	Blue
PE-08-BI-0500F-R	Red
PE-08-BI-0500F-E	Black
PE-08-BI-0500F-W	White
PE-08-BI-0500F-G	Green
PE-08-BI-0500F-Y	Yellow
PE-08-BI-0500F-O	Orange

Products shown in blue have a minimum order quantity of 50 coils.

Air & pneumatics LLDPE pipe

Accessories

1/4" OD 0.17" ID - 1000ft Coils

Part number	Colour
PE-08-BI-1000F-N	Natural
PE-08-BI-1000F-B	Blue
PE-08-BI-1000F-R	Red
PE-08-BI-1000F-E	Black
PE-08-BI-1000F-W	White
PE-08-BI-1000F-Y	Yellow
PE-08-BI-1000F-O	Orange

Products shown in blue have a minimum order quantity of 25 coils.

5/16" OD 0.187" ID - 500ft Coils

Part number	Colour
PE-10-CI-0500F-N	Natural
PE-10-CI-0500F-B	Blue
PE-10-CI-0500F-R	Red
PE-10-CI-0500F-E	Black
PE-10-CI-0500F-W	White
PE-10-CI-0500F-G	Green
PE-10-CI-0500F-Y	Yellow
PE-10-CI-0500F-O	Orange

Products shown in blue have a minimum order quantity of 50 coils.

3/8" OD 0.25" ID - 500ft Coils

Part number	Colour
PE-12-EI-0500F-N	Natural
PE-12-EI-0500F-B	Blue
PE-12-EI-0500F-R	Red
PE-12-EI-0500F-E	Black
PE-12-EI-0500F-W	White
PE-12-EI-0500F-G	Green
PE-12-EI-0500F-Y	Yellow
PE-12-EI-0500F-O	Orange

Products shown in blue have a minimum order quantity of 50 coils.

1/2" OD 0.375" ID - 250ft Coils

Part number	Colour
PE-16-GI-0250F-N	Natural
PE-16-GI-0250F-B	Blue
PE-16-GI-0250F-R	Red
PE-16-GI-0250F-E	Black
PE-16-GI-0250F-W	White
PE-16-GI-0250F-G	Green
PE-16-GI-0250F-Y	Yellow
PE-16-GI-0250F-O	Orange

Products shown in blue have a minimum order quantity of 50 coils.

Minimum order quantities

Popular items highlighted in black are generally in stock and available in minimum order quantities of 2 coils. Items listed in blue are non-standard and are subject to minimum order quantities unless in stock and will incur longer lead time.

Imperial sizes also available on application.

Collet Covers

The slip-on Collet Cover prevents accidental pipe removal or tampering. The pipe can be inserted with the Collet Cover already attached to the fittings or the cover can slide into position afterwards. The cover is easily removed when required and comes in a variety of colours for colour coding.

Colours available – Suffix indicates colours
E = Black Y = Yellow B = Blue
R = Red S = Grey G = Green

Collet Cover (Imperial)



Part number	Pipe OD	Bag qty	Box qty
PM1904S	5/32"	10	1000
PI1906S	3/16"	10	1000
PI1908S	1/4"	10	1000
PM1908S	5/16"	10	1000
PI1912S	3/8"	10	500
PI1916S	1/2"	10	500

Please indicate by suffix, colour required or grey will be supplied.

Collet Cover (Metric)



Part number	Pipe OD	Bag qty	Box qty
PM1904E	4	10	1000
PM1905E	5	10	1000
PM1906E	6	10	1000
PM1908E	8	10	1000
PM1910E	10	10	500
PM1912E	12	10	500
PM1915E	15	100	400
PM1918E	18	10	200
PM1922E	22	50	200

Please indicate by suffix, colour required or black will be supplied. 15mm to 22mm sizes available in black as standard, white, red or blue.

Locking Clip



Part number	Pipe OD	Bag qty	Box qty
PIC1808R	1/4"	100	5000
PMC1808R	5/16"	100	8000
PIC1812R	3/8"	100	1000
PIC1816R	1/2"	100	2000
PMC1815R	15mm	100	2000

Secures the collet in its position to prevent an accidental disconnection of the pipe.

Flow Bend Clip



Part number	Pipe OD	Box qty
PM2608S	8mm/5/16"	300
PM2610S	10mm/3/8"	200

Designed to support pipe and eliminate kinking.

Plug



Part number	Stem OD	Colour	Bag qty	Box qty
PM0804R	4	Red	10	1000
PM0805R	5	Red	10	1000
PM0806R	6	Red	10	500
PM0808R	8	Red	10	500
PM0810R	10	Red	10	400
PM0812R	12	Red	10	300
PM0815E	15	Black	10	200
PM0818E	18	Black	10	100
PM0822E	22	Black	10	100
PM0828E	28	Black	10	50

8mm size also available in black. Part No. PM0808E.

Tube Insert



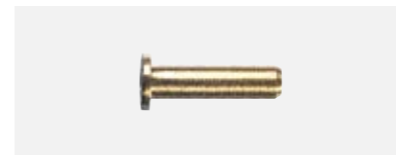
Part number	Pipe OD	Pipe ID	Box qty
TSI250S	3/8"	1/4"	1000
TSI312S	7/16"	5/16"	2500
TSI375S	1/2"	3/8"	500

Tube Insert



Part number	Pipe OD	Pipe ID	Bag qty	Box qty
TSM10N	10	7	50	1000
TSM1209S	12	9		1000
TSM15N	15	11.5	50	500

Tube Insert



Part number	Pipe OD	Bag qty	Box qty
LMTS04	4	1000	15000

Tube inserts should be used for soft wall tubing or when using polyurethane pipe above 10 bar to a maximum of 16 bar.

Collet Locking Tool



Part number	Size	Box qty
ICLT/2	3/16" - 1/2"	50

Tube Cutter



Part number	Box qty
TSNIP	50
BLADES only	300

Suitable for up to 12mm pipe.

Pipe Cutter



Part number	Box qty
JG-TS	60

Suitable for up to 22mm pipe.

Heavy Duty Pipe Cutter



Part number	Pack qty
HDC	20
BLADE-HDC Spare blade	1

Suitable for up to 28mm pipe.



Create an efficient high performance solution

For small to large commercial and industrial applications

The SharkBite Air & Pneumatics push-fit range provides fast, simple and reliable pipe connections. Available in 10 to 54mm sizes, the robust brass-body fittings can withstand high pressure and a range of system requirements, making it ideal for small to large commercial and industrial applications.

Suitable for use from the compressor to the point of use, we offer a wide range of fittings and anodised aluminium pipe, including a 45° elbow for improved air flow.

Using a simple push-fit action, pipes are instantly joined without the need for tools, silicon, hot works, solder or glue. Fittings can also be disconnected with a secure demounting tool, making system extensions and modifications quick and easy.

Designed to securely grip our range of anodised aluminium pipe, SharkBite is also compatible with powder coated aluminium, copper, PEXa and nylon pipes.

Features

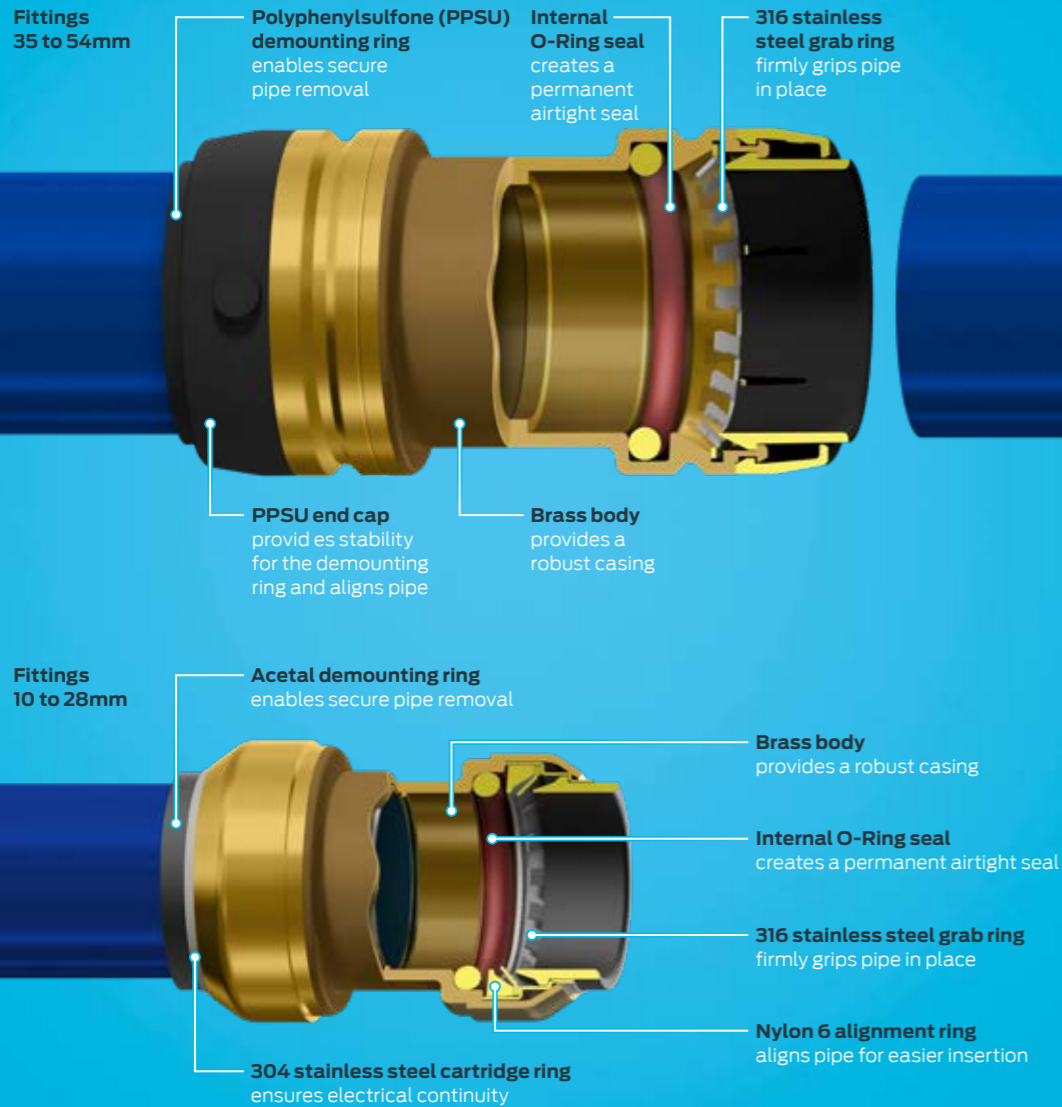
- Engineered brass body
- Push-fit connection ends
- Tamperproof secure demounting tool
- Nitrile O-Ring and stainless steel grab ring
- Suitable for air and vacuum applications up to 20 bar

Benefits

- Reliable leakproof solution that withstands high pressure
- Instant, tool-free, push-fit connection with no hot works, silicon, solvent or glue
- Corrosion-free solution that extends equipment lifecycle and reduces maintenance
- Quick and easy system reconfiguration and extension, with minimal downtime
- Lightweight and easy to handle material
- A versatile solution that connects to metal or plastic pipe

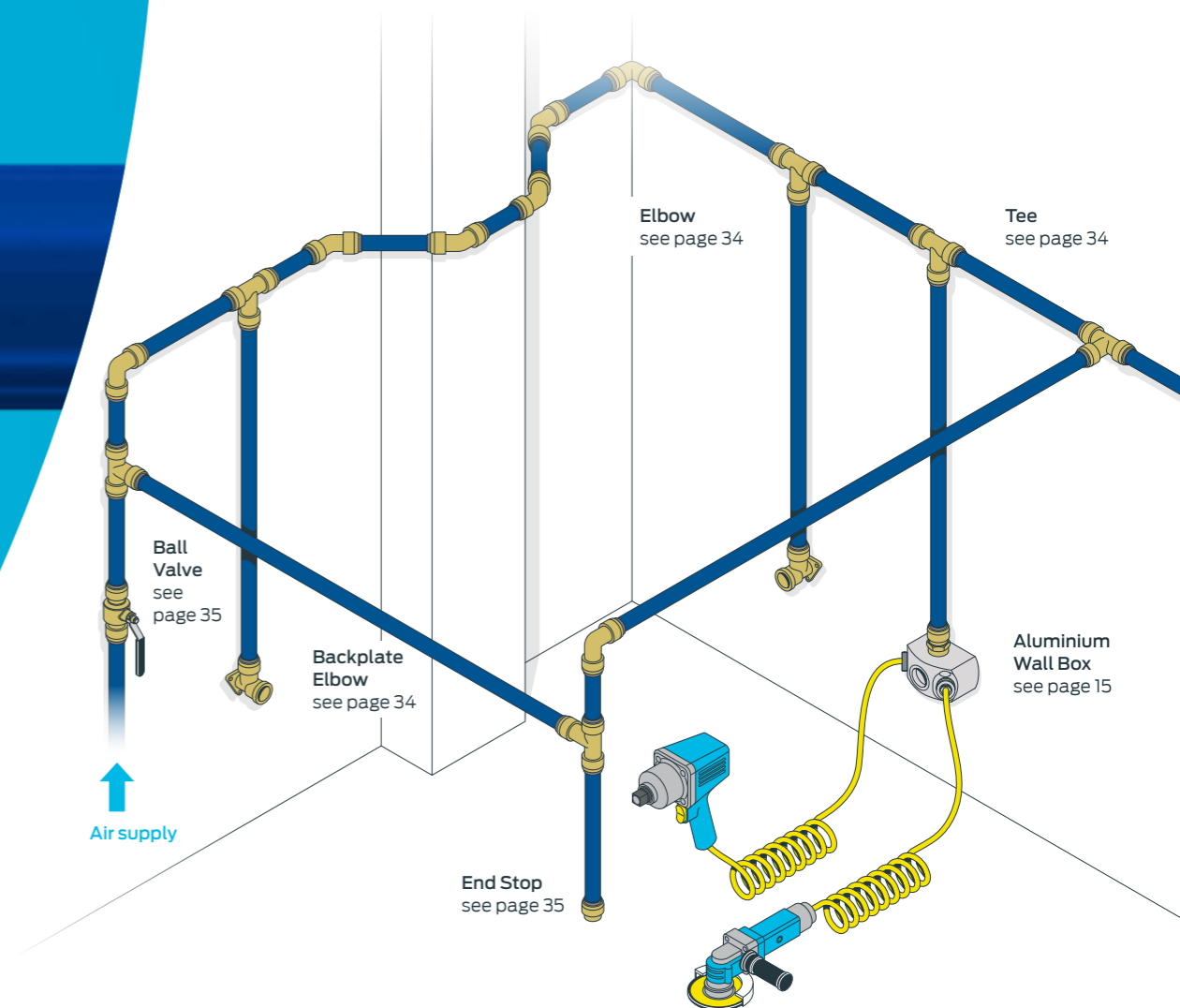
Inside SharkBite technology

SharkBite push-fit fittings use grip and seal technology. The stainless steel grab ring grips the pipe and the O-Ring provides an airtight seal.



Air system configuration

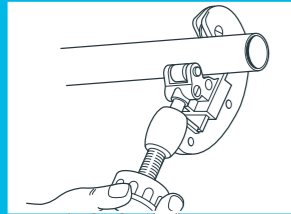
The SharkBite Air & Pneumatics system offers rapid assembly from the compressor to air line, through to the complete ring main and take off points.



Making a connection

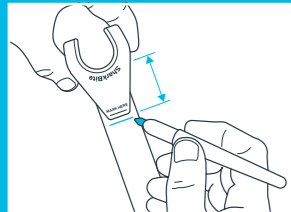
Connecting push-fit

Cutting the pipe



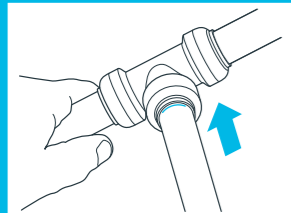
Cut the pipe square using a rotary pipe cutter and then debur using a SharkBite Depth/Deburring tool. There should be no burrs or sharp edges on the pipe end as this can damage the O-Ring during pipe insertion.

Measure the depth



Using the appropriate Depth Marker Demounting Clip or tape measure, mark the insertion depth onto the pipe.

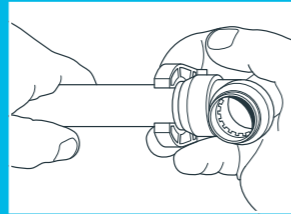
Making the connection



Align the pipe squarely with the fitting de-mounting ring and push the pipe into the fitting with a slight twist until the pipe reaches the pipe stop. If using plastic pipe, use a liner if specified by the pipe manufacturer.

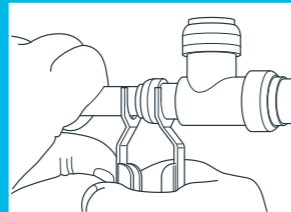
Demounting push-fit

Demounting 10-28mm with clip



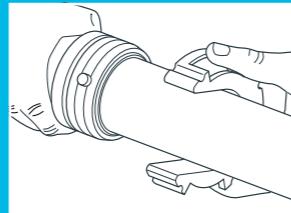
Holding the fitting in the palm of the hand, snap the demounting clip over the pipe, with the SharkBite logo away from the fitting. Slide the clip up to the demounting ring and press firmly on the two 'finger pads', while simultaneously twisting and pulling the pipe to release.

Demounting 10-28mm with tongs



Position the tongs over the fitting and pipe with the SharkBite logo facing away from the fitting. Squeeze the tongs together, while gripping the pipe in the other hand, simultaneously twist and pull the pipe to remove, if necessary. Use the thumb as a lever to assist release.

Demounting 35-54mm UXL



Snap the demounting clip over the pipe and locate the clip slots over the two studs in the end cap. Rotate the clip clockwise by 10° until it locks, then twist and pull the pipe from the fitting.

Note

SharkBite fittings utilise a PTFE coated O-Ring. This coating is semi-permanent and multiple pipe insertions/de-mountings will remove this coating, making pipe insertion harder.



Air & pneumatics Brass fittings

Straight Coupling



Part number	Pipe OD	Bag qty	Box qty
SBA0110	10	5	360
SBA0115	15	10	300
SBA0122	22	5	130
SBA0128	28	5	75
UXL			
SBA0135E	35	1	12
SBA0142E	42	1	12
SBA0154E	54	1	8

Reducing Coupling



Part number	Pipe OD	Pipe OD	Bag qty	Box qty
SBA011510	15	10	5	200
SBA012215	22	15	5	130
SBA012822	28	22	1	60
UXL				
SBA013528E	35	28	1	12
SBA014235E	42	35	1	8
SBA015442E	54	42	1	6

Slip Coupling



Part number	Pipe OD	Bag qty	Box qty
SBA01S15	15	10	170
SBA01S22	22	5	80
SBA01S28	28	5	40
UXL			
SBA01S35E	35	1	12
SBA01S42E	42	1	10
SBA01S54E	54	1	6

45 Degree Elbow



Part number	Pipe OD	Bag qty	Box qty
SBA0515	15	10	150
SBA0522	22	5	60
SBA0528	28	5	35
UXL			
SBA0535E	35	1	10
SBA0542E	42	1	8
SBA0554E	54	1	6

90 Degree Elbow



Part number	Pipe OD	Bag qty	Box qty
SBA0210	10	5	250
SBA0215	15	10	150
SBA0222	22	5	70
SBA0228	28	5	65
UXL			
SBA0235E	35	1	10
SBA0242E	42	1	8
SBA0254E	54	1	6

Female Backplate Elbow (FBSP thread)



Part number	Tube OD	Thread FBSP	Bag qty	Box qty
SBA121515FBP	15	1/2	5	100
SBA122220FBP	22	3/4	5	70

Equal Tee



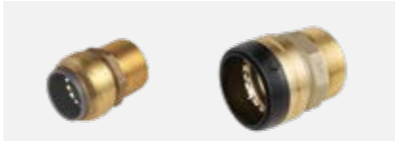
Part number	Pipe OD	Bag qty	Box qty
SBA0310	10	5	110
SBA0315	15	10	100
SBA0322	22	5	45
SBA0328	28	1	30
UXL			
SBA0335E	35	1	8
SBA0342E	42	1	5
SBA0354E	54	1	2

Reduced Branch Tee



Part number	Pipe OD	Pipe OD	Bag qty	Box qty
SBA03222210	22	10	1	60
SBA03222215	22	15	5	50
SBA03282815	28	15	1	25
SBA03282822	28	22	1	25
UXL				
SBA03353522E	35	22	1	12
SBA03353528E	35	28	1	12
SBA03424222E	42	22	1	6
SBA03424228E	42	28	1	6
SBA03424235E	42	35	1	4
SBA03545428E	54	28	1	5
SBA03545435E	54	35	1	5
SBA03545442E	54	42	1	5

Male Threaded Connector (MBSP thread)



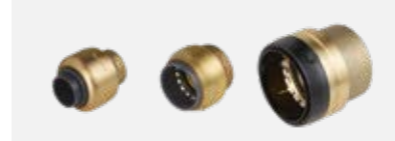
Part number	Pipe OD	Thread MBSP	Bag qty	Box qty
SBA111515MT	15	1/2	5	250
SBA112220MT	22	3/4	5	150
SBA112825MT	28	1	1	120
UXL				
SBA113532ME	35	1 1/4	1	15
SBA114240ME	42	1 1/2	1	12
SBA115450ME	54	2	1	10

Female Threaded Connector (FBSP thread)



Part number	Pipe OD	Thread FBSP	Bag qty	Box qty
SBA111515F	15	1/2	5	200
SBA112220F	22	3/4	5	140
UXL				
SBA113532FE	35	1 1/4	1	15
SBA114240FE	42	1 1/2	1	12
SBA115450FE	54	2	1	10

End Stop



Part number	Pipe OD	Bag qty	Box qty
SBA0410	10	5	600
SBA0415	15	10	500
SBA0422	22	5	250
SBA0428	28	5	130
UXL			
SBA0435E	35	1	20
SBA0442E	42	1	16
SBA0454E	54	1	12

Brass valves

Quarter Turn Ball Valve



Part number	Pipe OD	Bag qty	Box qty
SBA2715	15	1	30
SBA2722	22	1	16
SBA2728	28	1	12
UXL			
SBA2735E	35	1	9
SBA2742E	42	1	4
SBA2754E	54	1	4

Tamperproof lockable handles.

Pipe

Anodised Aluminium Pipe



Part number	Pipe OD	Size mm/m	Pack qty
AL-IR1513-3M-20B	15	13 x 3	20
AL-IR2220-3M-20B	22	20 x 3	20
AL-IR2826-3M-10B	28	26 x 3	10
AL-IR3531-3M-10B	35	31 x 3	5
AL-IR4238-3M-10B	42	38 x 3	5
AL-IR5450-3M-10B	54	50 x 3	5

Pipe Clips



Part number	Size mm	Box qty
SBA0855510	10-12	100
SBA0855515	14-16	100
SBA0855518	16-20	100
SBA0855522	20-23	50
SBA0855531	28-32	50
SBA0855538	35-40	25
SBA0855542	40-44	25
SBA0855554	48-55	15
SBA08555310*	10	25

* Spacer block can only be used with sizes up to and including SBA0855531

Accessories

Depth/Deburring Tool



Part number	Pipe OD	Bag qty
UXLG03	35 - 54	1

Depth Marker Demounting Clip



Part number	Pipe OD	Bag qty
SB2910	10	1
SB2915	15	1
SB2922	22	1
SB2928	28	1

Demounting Tongs



Part number	Pipe OD	Bag qty
SB3010	10	1
SB3015	15	1
SB3022	22	1
SB3028	28	1

Demounting Clip (UXL sizes)



Part number	Pipe OD	Bag qty	Box qty
UXLDC35	35	1	100
UXLDC41	42	1	80
UXLDC54	54	1	60

Selecting the right pipe

Select the pipe and diameter for your application based on the required flow against pressure drop.

Pipe flow rates

Maximum recommended flow rates according to ISO 4414

Working Pressure		Aluminium Pipe					Nylon Pipe				
kPa	(bar)	15mm	22mm	28mm	35mm	42mm	54mm	10mm	15mm	22mm	28mm
20	0.2	0.86 l/s	2.11 l/s	3.57 l/s	9.81 l/s	15.0 l/s	28.0 l/s	0.33 l/s	0.79 l/s	2.0 l/s	2.9 l/s
40	0.4	1.32 l/s	3.27 l/s	5.49 l/s	10.2 l/s	17.0 l/s	43.0 l/s	0.51 l/s	1.21 l/s	3.0 l/s	4.5 l/s
63	0.63	1.80 l/s	4.38 l/s	7.39 l/s	13.7 l/s	22.9 l/s	59.0 l/s	0.69 l/s	1.64 l/s	4.1 l/s	6.0 l/s
80	0.8	2.08 l/s	5.19 l/s	8.91 l/s	16.5 l/s	27.4 l/s	70.0 l/s	0.81 l/s	1.90 l/s	4.8 l/s	7.2 l/s
100	1	2.46 l/s	6.14 l/s	10.43 l/s	19.3 l/s	32.0 l/s	82.0 l/s	0.97 l/s	2.25 l/s	5.7 l/s	8.4 l/s
125	1.25	2.93 l/s	7.25 l/s	12.05 l/s	22.4 l/s	37.9 l/s	97.0 l/s	1.14 l/s	2.68 l/s	6.7 l/s	9.8 l/s
160	1.6	3.59 l/s	8.55 l/s	14.67 l/s	27.5 l/s	46.0 l/s	120.0 l/s	1.38 l/s	3.28 l/s	8.0 l/s	11.7 l/s
200	2	4.25 l/s	10.78 l/s	18.13 l/s	33.0 l/s	55.4 l/s	140.0 l/s	1.64 l/s	3.88 l/s	9.9 l/s	14.8 l/s
250	2.5	5.20 l/s	12.58 l/s	21.53 l/s	39.9 l/s	66.9 l/s	170.0 l/s	2.03 l/s	4.75 l/s	11.7 l/s	17.3 l/s
315	3.15	6.33 l/s	15.62 l/s	26.47 l/s	48.5 l/s	82.1 l/s	210.0 l/s	2.43 l/s	5.78 l/s	14.3 l/s	21.7 l/s
400	4	7.84 l/s	19.13 l/s	32.33 l/s	59.9 l/s	100.0 l/s	260.0 l/s	3.00 l/s	7.15 l/s	17.7 l/s	26.3 l/s
500	5	9.46 l/s	23.65 l/s	39.67 l/s	74.4 l/s	124.3 l/s	320.0 l/s	3.73 l/s	8.65 l/s	22.0 l/s	32.2 l/s
630	6.3	12.26 l/s	29.20 l/s	49.47 l/s	90.0 l/s	150.0 l/s	390.0 l/s	4.57 l/s	11.15 l/s	27.0 l/s	40.2 l/s
800	8	15.10 l/s	36.75 l/s	61.73 l/s	115.0 l/s	192.9 l/s	490.0 l/s	5.70 l/s	13.75 l/s	34.0 l/s	50.3 l/s
1000	10	17.97 l/s	45.30 l/s	75.47 l/s	141.3 l/s	238.6 l/s	610.0 l/s	7.10 l/s	16.43 l/s	42.0 l/s	61.7 l/s
1250	12.5	22.60 l/s	56.37 l/s	96.40 l/s	178.8 l/s	297.1 l/s	750.0 l/s	8.27 l/s	20.50 l/s	52.3 l/s	77.5 l/s
1600	16	29.20 l/s	71.47 l/s	120.00 l/s	223.8 l/s	375.7 l/s	950.0 l/s	10.70 l/s	26.50 l/s	66.3 l/s	97.5 l/s

Note: The flow rates are based on 10% pressure drops for 10 and 15mm pipe sizes and 5% for 22, 28, 35, 42 and 54mm pipe sizes.

John Guest Air working pressure and temperature

Diameter	Temperature	Rigid Nylon Pipe	Powder Coated Aluminium Pipe	Copper Pipe	LLDPE Pipe
4mm	-20°C	N/A	N/A	N/A	10 bar
	23°C	N/A	N/A	N/A	10 bar
	65°C	N/A	N/A	N/A	7 bar
6mm	-20°C	N/A	N/A	N/A	10 bar
	23°C	N/A	N/A	N/A	10 bar
	65°C	N/A	N/A	N/A	7 bar
8mm	-20°C	N/A	N/A	N/A	10 bar
	23°C	N/A	N/A	N/A	10 bar
	65°C	N/A	N/A	N/A	7 bar
10mm	-20°C	N/A	N/A	N/A	10 bar
	23°C	N/A	N/A	N/A	10 bar
	65°C	N/A	N/A	N/A	7 bar
12mm	-20°C	10 bar	N/A	N/A	10 bar
	23°C	10 bar	N/A	N/A	10 bar
	65°C	7 bar	N/A	N/A	7 bar
15mm	-20°C	10 bar	10 bar	10 bar	10 bar
	23°C	10 bar	10 bar	10 bar	10 bar
	65°C	7 bar	7 bar	7 bar	7 bar
18mm	-20°C	10 bar	10 bar	N/A	N/A
	23°C	10 bar	10 bar	N/A	N/A
	65°C	7 bar	7 bar	N/A	N/A
22mm	-20°C	10 bar	10 bar	10 bar	N/A
	23°C	10 bar	10 bar	10 bar	N/A
	65°C	7 bar	7 bar	7 bar	N/A
28mm	-20°C	10 bar	10 bar	10 bar	N/A
	23°C	10 bar	10 bar	10 bar	N/A
	65°C	7 bar	7 bar	7 bar	N/A

SharkBite Air working pressure and temperature

Diameter	Temperature	Nylon Pipe	PEXa Pipe	Anodised Aluminium Pipe	Powder Coated Aluminium Pipe	Copper Pipe	LLDPE Pipe
10mm	-20°C	15 bar	N/A	N/A	N/A	16 bar	N/A
	20°C	15 bar	N/A	N/A	N/A	16 bar	N/A
	65°C	8 bar	N/A	N/A	N/A	10 bar	N/A
15mm	-20°C	15 bar	16 bar	20 bar	20 bar	20 bar	10 bar
	20°C	15 bar	16 bar	20 bar	20 bar	20 bar	10 bar
	65°C	8 bar	9 bar	16 bar	16 bar	16 bar	7 bar
22mm	-20°C	14 bar	16 bar	20 bar	20 bar	20 bar	N/A
	20°C	14 bar	16 bar	20 bar	20 bar	20 bar	N/A
	65°C	7 bar	9 bar	16 bar	16 bar	16 bar	N/A
28mm	-20°C	14 bar	16 bar	20 bar	20 bar	20 bar	N/A
	20°C	14 bar	16 bar	20 bar	20 bar	20 bar	N/A
	65°C	7 bar	9 bar	16 bar	16 bar	16 bar	N/A
35mm	-20°C	N/A	N/A	20 bar	20 bar	20 bar	N/A
	20°C	N/A	N/A	20 bar	20 bar	20 bar	N/A
	65°C	N/A	N/A	16 bar	16 bar	16 bar	N/A
42mm	-20°C	N/A	N/A	20 bar	20 bar	20 bar	N/A
	20°C	N/A	N/A	20 bar	20 bar	20 bar	N/A
	65°C	N/A	N/A	16 bar	16 bar	16 bar	N/A
54mm	-20°C	N/A	N/A	18 bar	18 bar	18 bar	N/A
	20°C	N/A	N/A	18 bar	18 bar	18 bar	N/A
	65°C	N/A	N/A	14 bar	14 bar	14 bar	N/A

Note: Ball Valves. 16 bar @ 20°C max.

System pipe sizing

To determine the correct size of pipe required for a closed loop network, select the flow and pipe length for your application from the tables. Velocity is not used in the calculation. The calculations show the data for an 8 and 16 bar system with SharkBite Anodised Aluminium system pipe, further data is available on request.

8 bar network pressure using hard anodised pipe with a maximum 0.24 bar (3%) pressure loss

Flow	Length (m)	Length (m)											
		Nm³/H	Nm³/min	50	100	150	300	500	750	1000	1300	1600	2000
10	0.2	15	15	15	22	22	22	22	22	22	22	22	28
30	0.5	22	22	22	28	28	28	28	28	28	28	35	35
50	0.8	22	28	28	28	35	35	35	35	35	42	42	42
70	1.2	22	28	28	35	35	42	42	42	42	42	42	54
100	1.7	28	35	35	42	42	42	42	42	54	54	54	54
150	2.5	35	35	42	42	54	54	54	54	54	54	54	54
250	4.2	35	42	42	54	54	54	54	54	54	54	54	54
350	5.8	42	54	54	54	54	54	54	54	54	54	54	54
500	8.3	54	54	54	54	54	54	54	54	54	54	54	54
750	12.5	54	54	54	54	54	54	54	54	54	54	54	54

16 bar network pressure using hard anodised pipe with a maximum 0.49 bar (3%) pressure loss

Flow	Length (m)	Length (m)											
		Nm³/H	Nm³/min	50	100	150	300	500	750	1000	1300	1600	2000
10	0.2	15	15	15	15	15	15	15	15	22	22	22	22
30	0.5	15	15	22	22	22	22	22	22	28	28	28	28
50	0.8	22	22	22	22	22	28	28	28	28	28	35	35
70	1.2	22	22	22	28	28	28	35	35	35	35	35	35
100	1.7	22	22	28	28	35	35	35	35	42	42	42	42
150	2.5	28	28	28	35	35	42	42	42	42	42	54	54
250	4.2	28	35	35	42	42	42	42	42	54	54	54	54
350	5.8	35	35	42	42	42	54	54	54	54	54	54	54
500	8.3	35	42	42	54	54	54	54	54	54	54	54	54
750	12.5	42	54	54	54	54	54	54	54	54	54	54	54
1000	16.7	54	54	54	54	54	54	54	54	54	54	54	54
1250	20.8	54	54	54	54	54	54	54	54	54	54	54	54
1500	25.0	54	54	54	54	54	54	54	54	54	54	54	54
1750	29.2	54	54	54	54	54	54	54	54	54	54	54	54
2000	33.3	54	54	54	54	54	54	54	54	54	54	54	54

Key information

Condition of sale

All purchases are subject to our standard terms and conditions of sale, which can be found on johnsguest.com (John Guest Air & Pneumatics products) and rwc.co.uk (SharkBite Air & Pneumatics products).

Technical information

RWC and its family of products are specifically designed and manufactured to the technical specifications set out in our Technical Specification Guides on our websites.

All products should be selected, used and maintained in accordance with these technical specifications and checklists. It is the end users responsibility to ensure that products are suitable for their intended application, are properly installed and maintained, and are used in accordance with our technical guides.

RWC operates a programme of continuous product development, and therefore reserves the right to modify or amend the specification of our products without notice. All information in this publication is given in good faith and believed to be correct at the time of going to print.

Maintenance & replacement intervals

Our fittings generally require little maintenance but as a minimum we recommend routine visual inspection. Frequency of visual inspection will depend on the application and risk of failure. If after inspection, a product appears to be damaged, cracked, charred, discoloured, heat distorted, corroded or leaking, the product should be replaced.

Product life cycle is affected by the severity of the application, the hostility of the working environment and contact with aggressive chemicals or liquids. It is important that replacement intervals are considered by customers based on previous service life or when failure could result in unacceptable downtime, damage or risk of injury.

Orders & enquiries

01895 449233

Call our sales team to discuss pricing, product selection and special requirements.





**Reliance Worldwide
Corporation (UK) Limited**

Horton Road
West Drayton
UB7 8JL
United Kingdom
Tel: +44 (0) 1895 449233